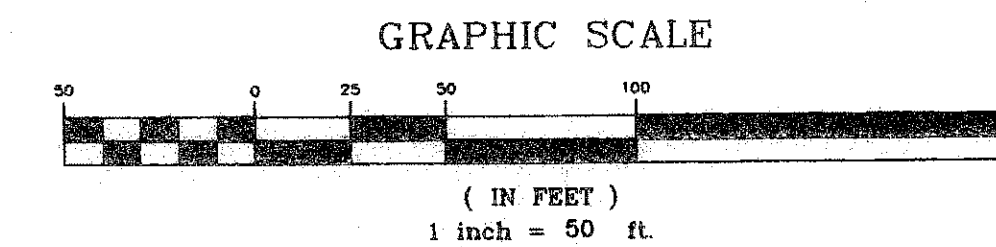
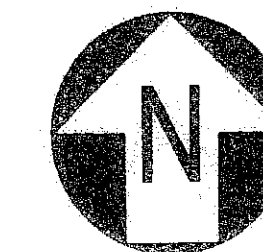
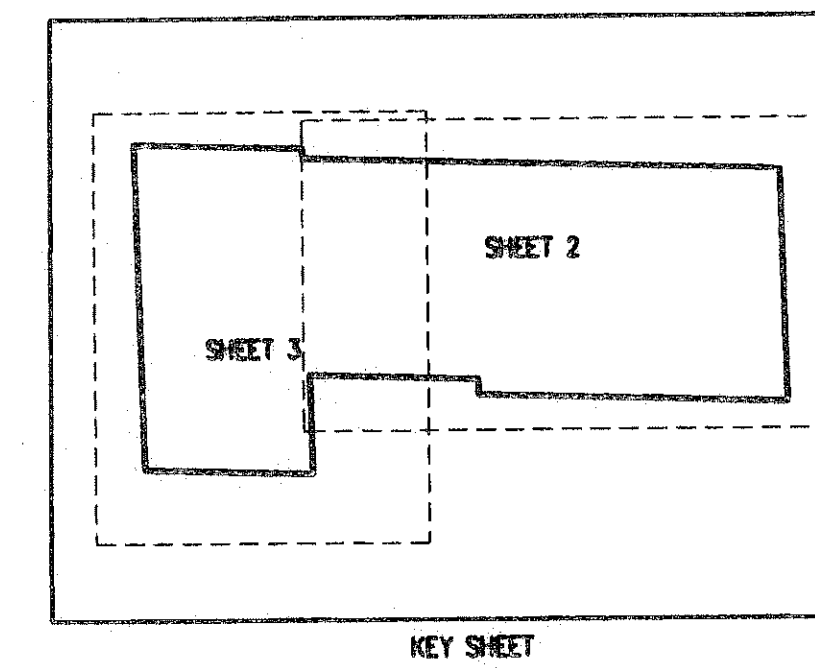
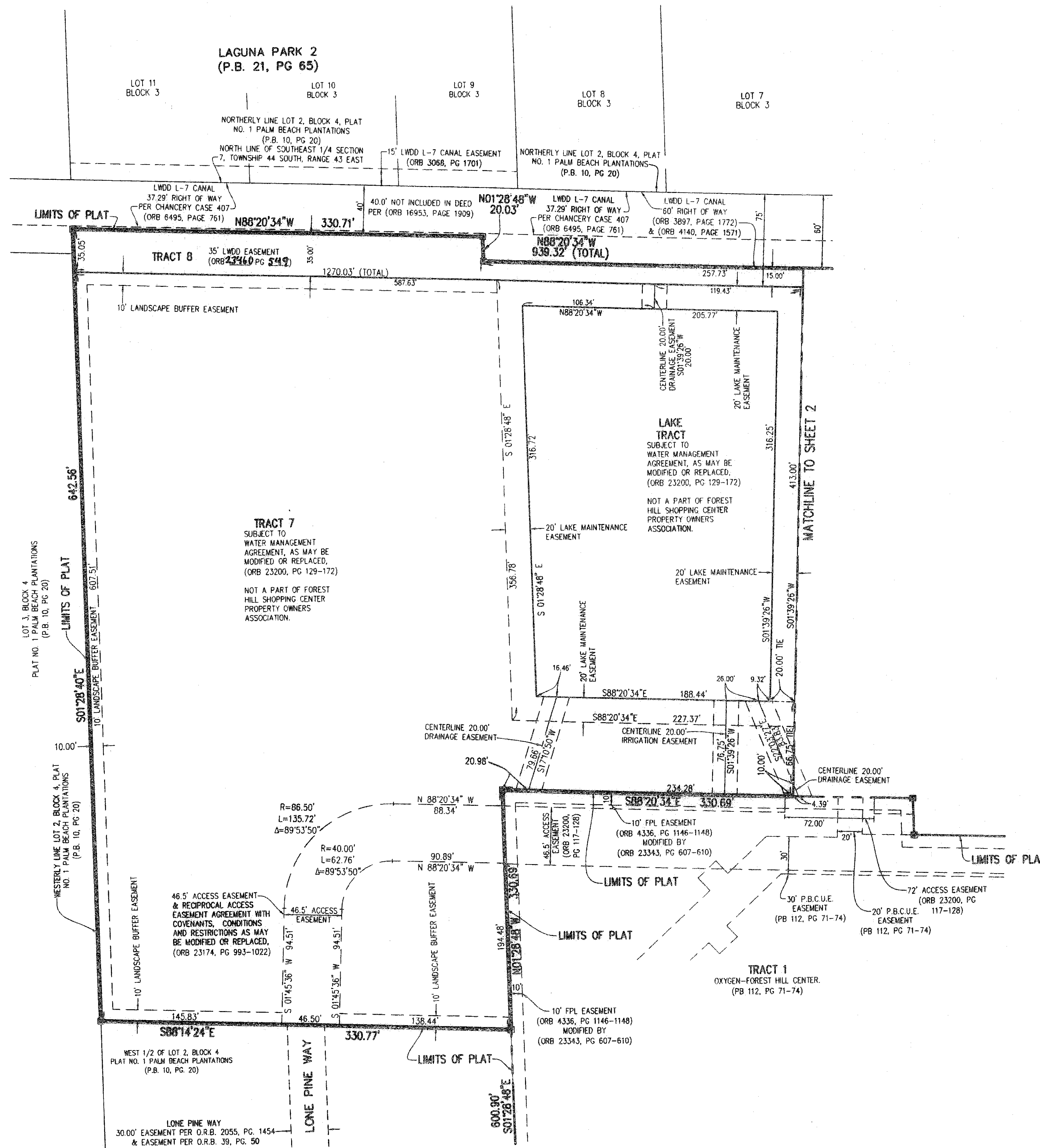


OXYGEN DEVELOPMENT RE-PLAT

BEING A REPLAT OF A PORTION OF OXYGEN-FOREST HILL CENTER AS RECORDED IN
 PLAT BOOK 112, PAGES 71-74, AND LYING IN SECTION 7, TOWNSHIP 44 SOUTH, RANGE 43 EAST
 VILLAGE OF PALM SPRINGS, PALM BEACH COUNTY, FLORIDA
 SHEET 3 OF 3 SEPTEMBER 2009



181



LEGEND

- R RADIUS
- L ARC LENGTH
- Δ DELTA ANGLE
- (M) MEASURED
- O.R.B. OFFICIAL RECORD BOOK
- L.A.E. LIMITED ACCESS EASEMENT
- R.O.W. RIGHT-OF-WAY
- C.B. CHORD BEARING
- P.R.C. POINT OF REVERSE CURVATURE
- P.B. PLAT BOOK
- PG. PAGE
- P.B.C.U.E. PALM BEACH COUNTY UTILITY EASEMENT
- D.E. DRAINAGE EASEMENT
- CL CENTER LINE
- ◻ EXISTING PERMANENT REFERENCE MONUMENT LB#6603
- SET PERMANENT REFERENCE MONUMENT LB#6603
- N.R. NON-RADIAL
- LWDD LAKE WORTH DRAINAGE DISTRICT

OXYGEN DEVELOPMENT RE-PLAT



1201 BELVEDERE ROAD, WEST PALM BEACH, FLORIDA 33405
 PH (561)655-1151 - FAX (561)832-9390
 WWW.ENGENUITYGROUP.COM

DATE	SEPT. 2009
SCALE	1" = 50'
CAD FILE	7045.01
DRAWN	ATGHI
CHECKED	

SHEET	3/3
	JOB NO. 7045.01

d:\land projects\82\7045.01\enr\7045.01_03.plt SEPT. 2009 SUBMITTAL.DWG 9/4/2009 3:51:42 PM EDT